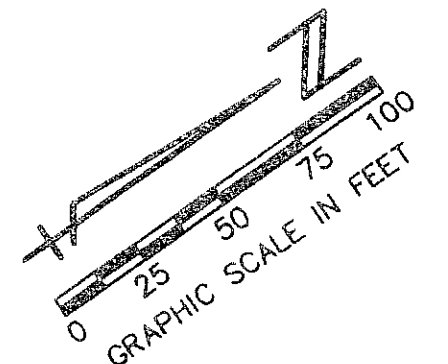


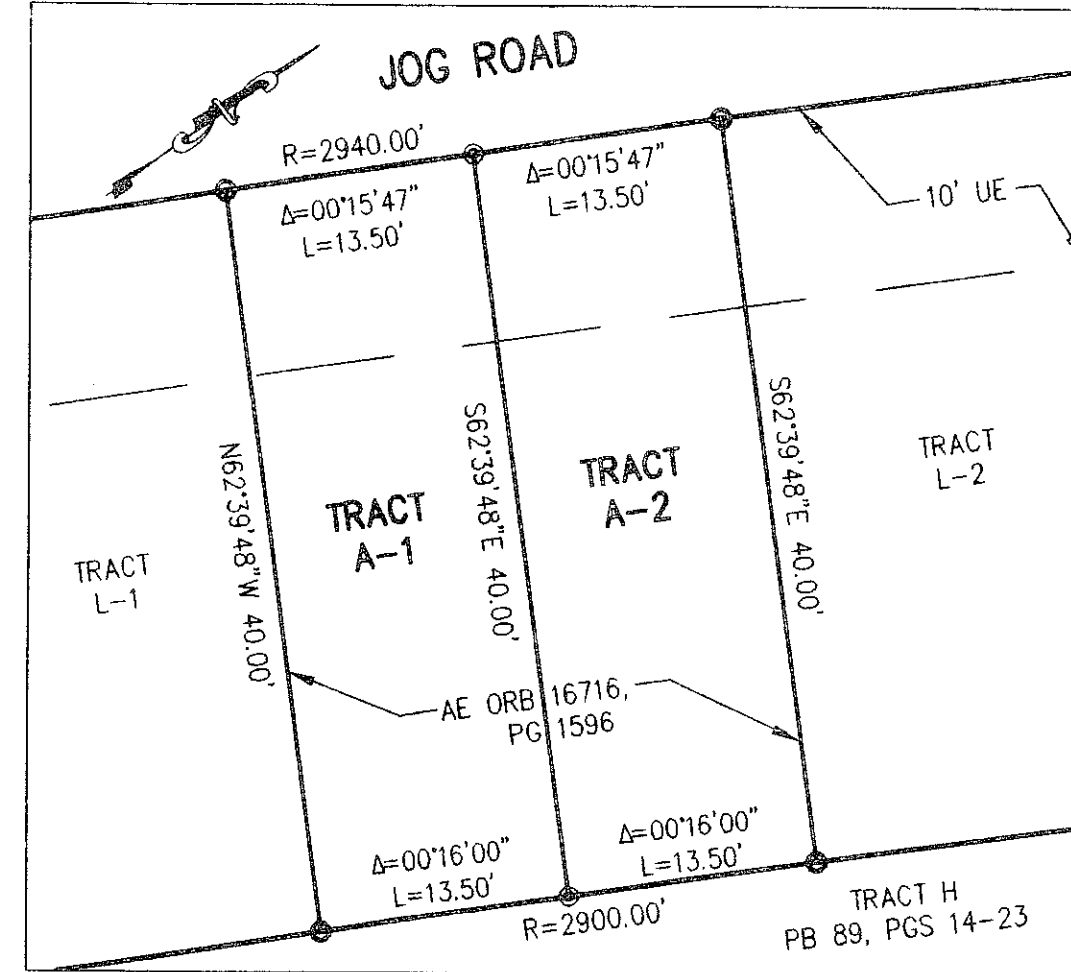
STATE OF FLORIDA  
COUNTY OF PALM BEACH  
THIS PLAT WAS FILED FOR  
RECORD \_\_\_\_\_ DAY OF \_\_\_\_\_  
AD, 2006 AND DULY RECORDED  
IN PLAT BOOK \_\_\_\_\_ ON PAGES  
\_\_\_\_\_ AND \_\_\_\_\_  
SHARON R. BOCK, CLERK AND COMPTROLLER  
BY: \_\_\_\_\_, D.C.

CIRCUIT COURT SEAL

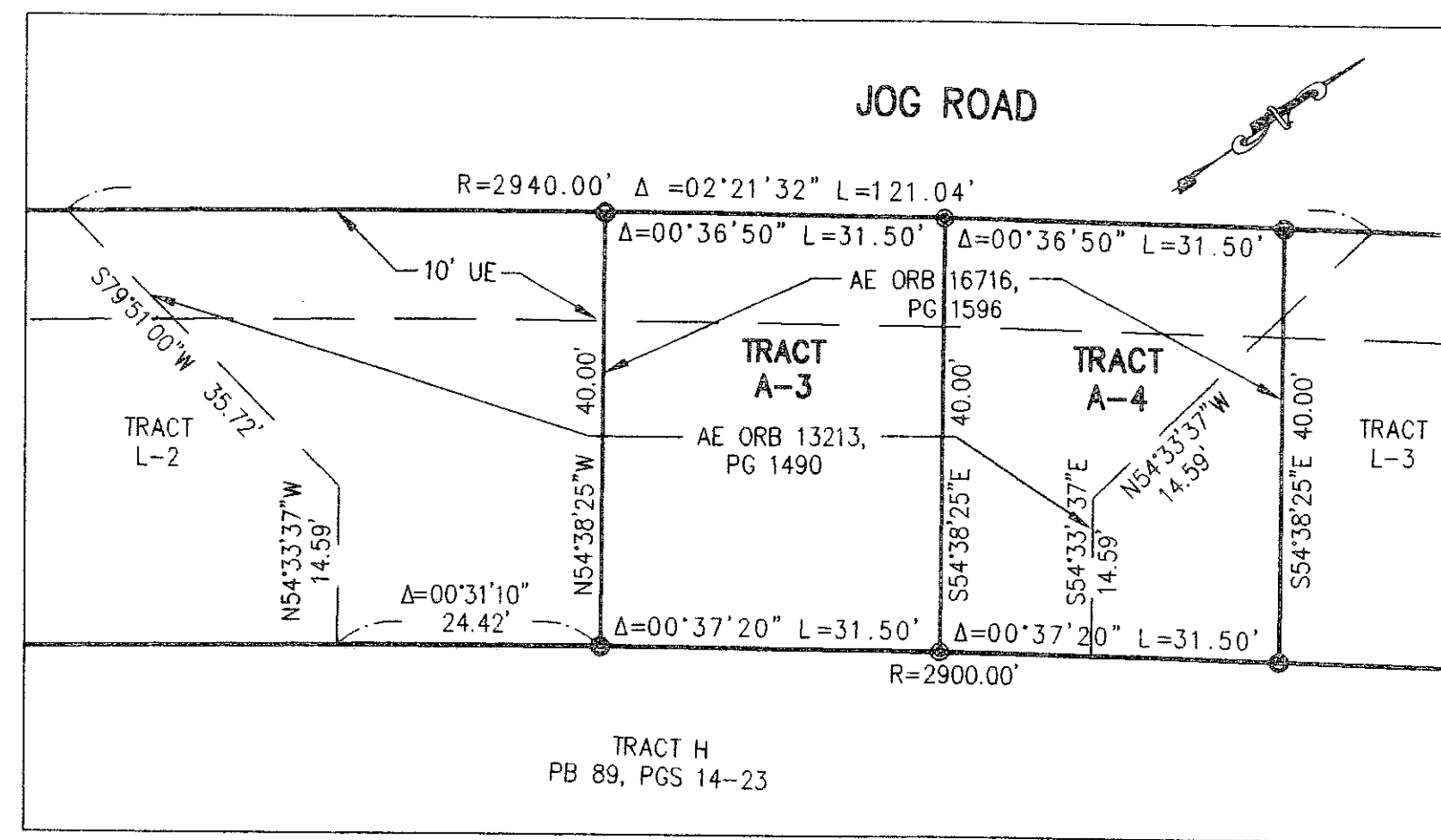


# MIRASOL TRACT L

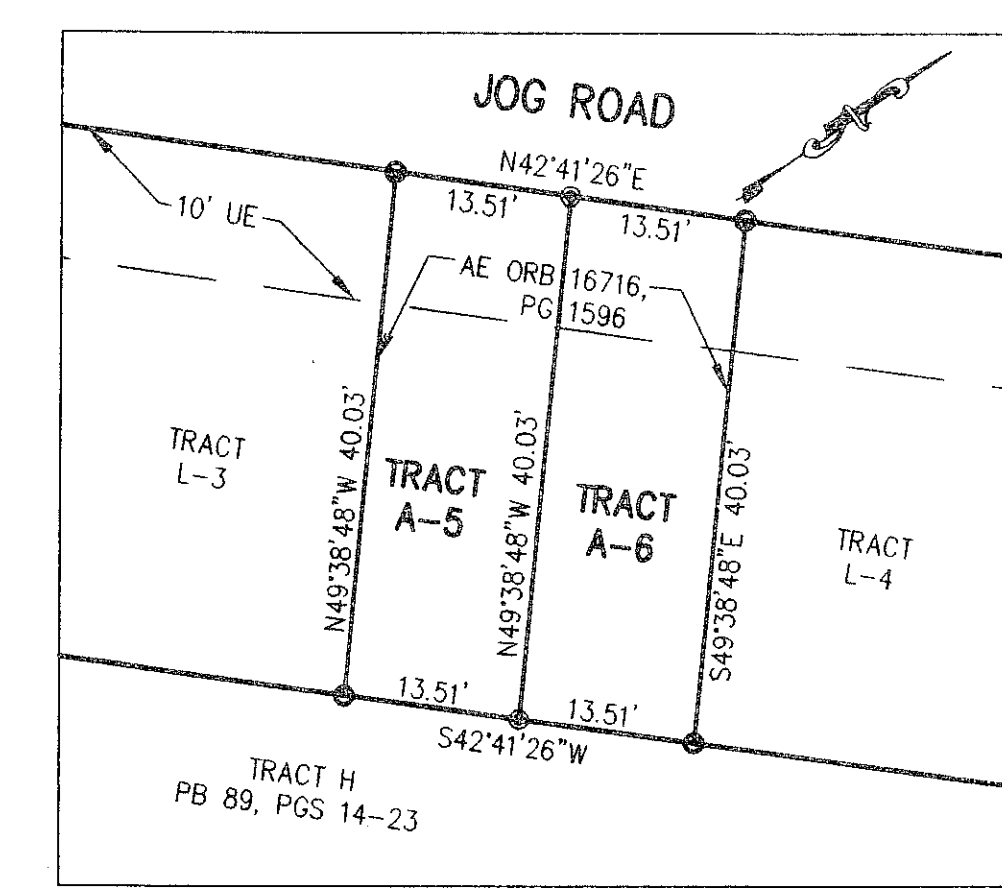
BEING A REPLAT OF TRACT L, MIRASOL PLAT ONE, AS RECORDED IN  
PLAT BOOK 89, PAGES 14 THROUGH 23 OF THE PUBLIC RECORDS  
OF PALM BEACH COUNTY, FLORIDA  
PART OF MIRASOL P.C.D.  
BEING IN SECTION 03, TOWNSHIP 42 SOUTH, RANGE 42 EAST,  
CITY OF PALM BEACH GARDENS,  
PALM BEACH COUNTY, FLORIDA  
SHEET 2 OF 2



DETAIL A  
NOT TO SCALE



DETAIL B  
NOT TO SCALE



DETAIL C  
NOT TO SCALE

MIRASOL PLAT SIX  
PB 104, PGS 89-109  
TRACT LK-19

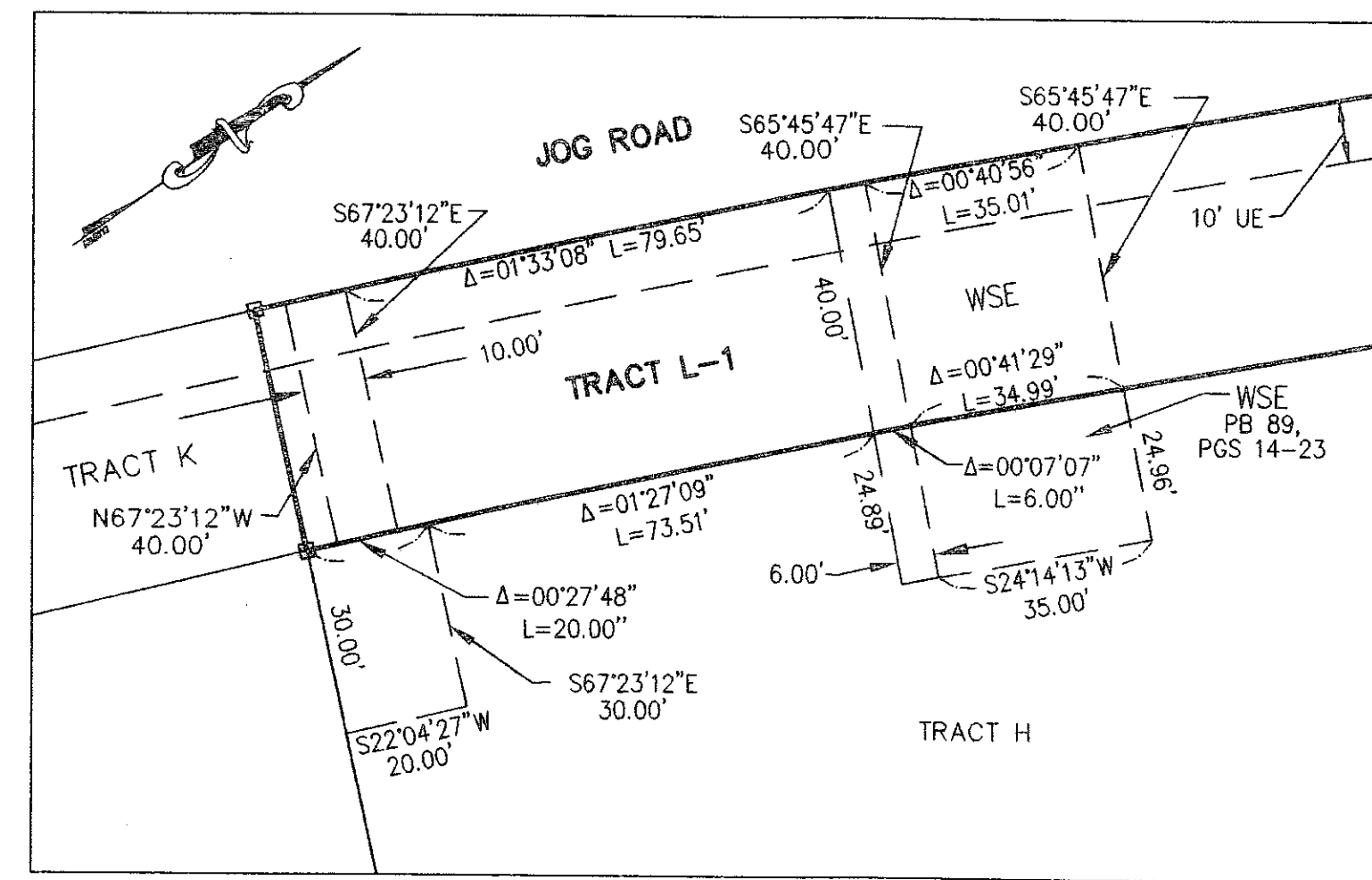
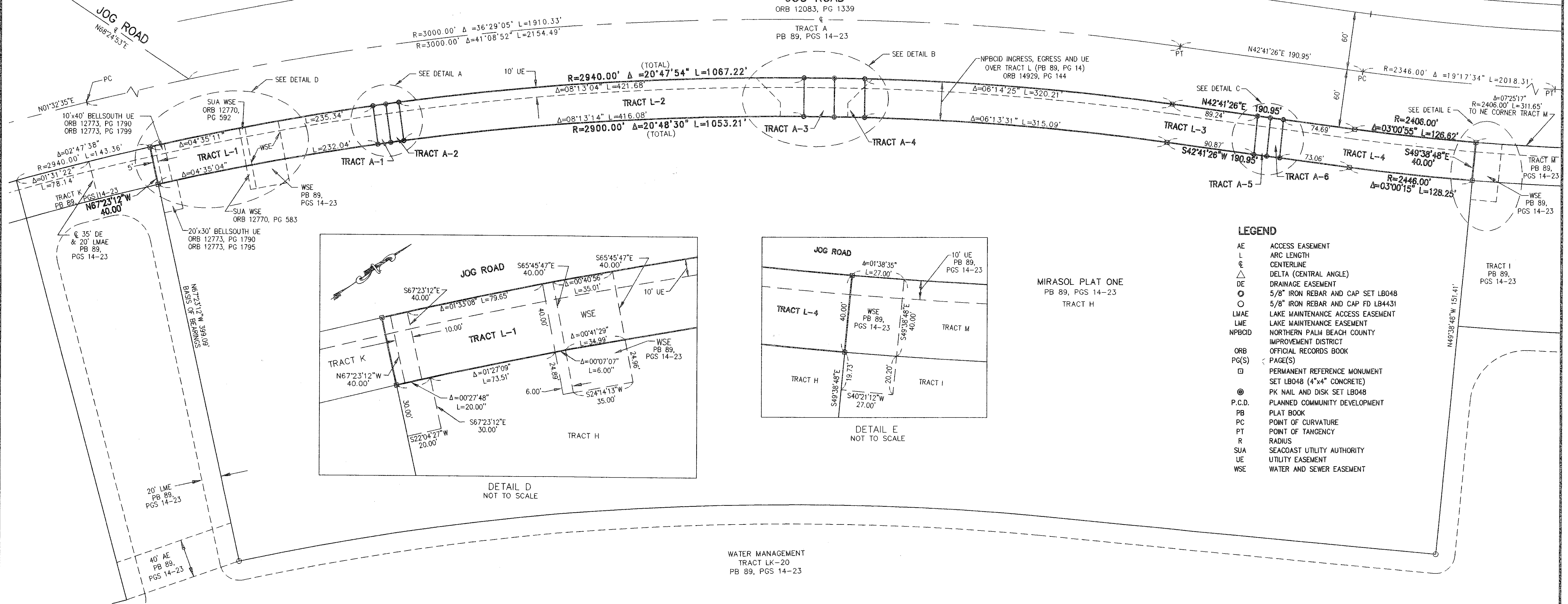
MIRASOL PARCELS H & I  
PB 90, PGS 41-48  
TRACT LK-19

TRACT M-1  
PB 104, PGS 89-109

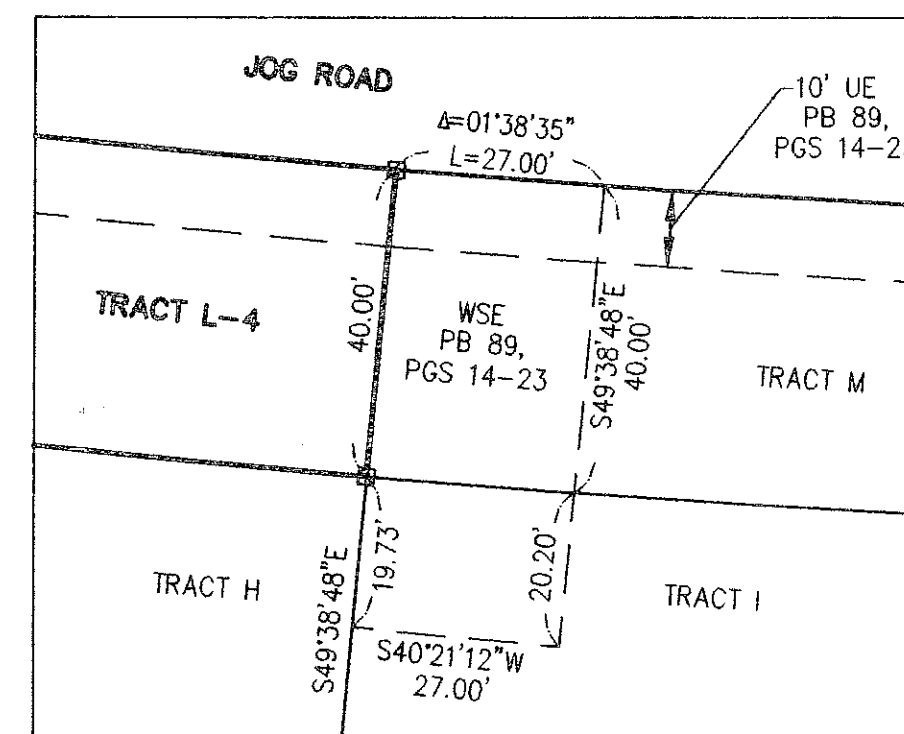
TRACT B  
PB 90, PGS 41-48

JOG ROAD  
ORB 12083, PG 1339

TRACT A  
PB 89, PGS 14-23



DETAIL D  
NOT TO SCALE



DETAIL E  
NOT TO SCALE

MIRASOL PLAT ONE  
PB 89, PGS 14-23  
TRACT H

### LEGEND

- AE ACCESS EASEMENT
- L ARC LENGTH
- CL CENTERLINE
- Δ DELTA (CENTRAL ANGLE)
- DE DRAINAGE EASEMENT
- 5/8" IRON REBAR AND CAP SET LB048
- 5/8" IRON REBAR AND CAP FD LB4431
- LMAE LAKE MAINTENANCE ACCESS EASEMENT
- LME LAKE MAINTENANCE EASEMENT
- NPBCID NORTHERN PALM BEACH COUNTY IMPROVEMENT DISTRICT
- ORB OFFICIAL RECORDS BOOK
- PG(S) PAGE(S)
- PERMANENT REFERENCE MONUMENT
- SET LB048 (4"x4" CONCRETE)
- PK NAIL AND DISK SET LB048
- P.C.D. PLANNED COMMUNITY DEVELOPMENT
- PB PLAT BOOK
- PC POINT OF CURVATURE
- PT POINT OF TANGENCY
- R RADIUS
- SUA SEACOAST UTILITY AUTHORITY
- UE UTILITY EASEMENT
- WSE WATER AND SEWER EASEMENT

WATER MANAGEMENT  
TRACT LK-20  
PB 89, PGS 14-23

THIS INSTRUMENT WAS PREPARED BY MANUEL A. GUTIERREZ, P.S.M. IN  
THE OFFICES OF MOCK, ROOS & ASSOCIATES, INC., 5720 CORPORATE WAY,  
WEST PALM BEACH, FLORIDA 33407.

SCALE:  
1"=50'  
P.A. NO.:  
A1075.03  
DATE:  
JULY 2006  
DRAWING NO.  
42-42-03-191

**MOCK • ROOS**  
ENGINEERS • SURVEYORS • PLANNERS

5720 Corporate Way, West Palm Beach, Florida 33407  
(561) 683-3113, fax 478-7248

**MIRASOL TRACT L**  
BEING A REPLAT OF TRACT L,  
MIRASOL PLAT ONE,  
PLAT BOOK 89, PAGES 14 THROUGH 23  
PART OF MIRASOL P.C.D.  
BEING IN SECTION 03,  
TOWNSHIP 42 SOUTH, RANGE 42 EAST,  
CITY OF PALM BEACH GARDENS,  
PALM BEACH COUNTY, FLORIDA